



20 Western Green, Wiveringham, DN15 9NX

£219,950

Looking onto an area known as 'the nest' this is perfect for wildlife and a bit of quiet village life. Beautifully positioned in a lovely spot within the very popular village of Wiveringham, we have an immaculately presented two bedroom semi detached home with a very handy loft room and an office.

Downstairs we have an open plan lounge diner with a good size kitchen leading onto a conservatory. Recently refurbished bathroom suite with a walk-in Aqualisa shower. Outside we have a drive for a couple of vehicles and a detached garage, the outlook at the back is stunning,

Please get in touch to book a viewing or for anymore information.

Entrance hall



Bedroom one



Lounge diner



Bedroom two



Kitchen



Conservatory

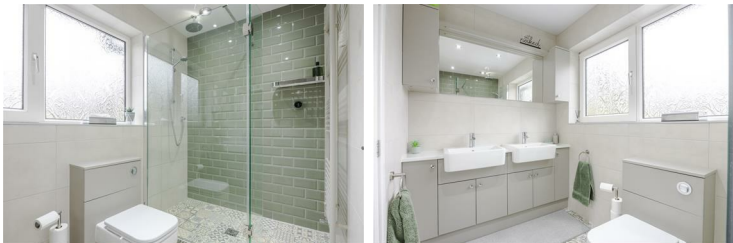


Office



Landing

Bathroom



Loft room



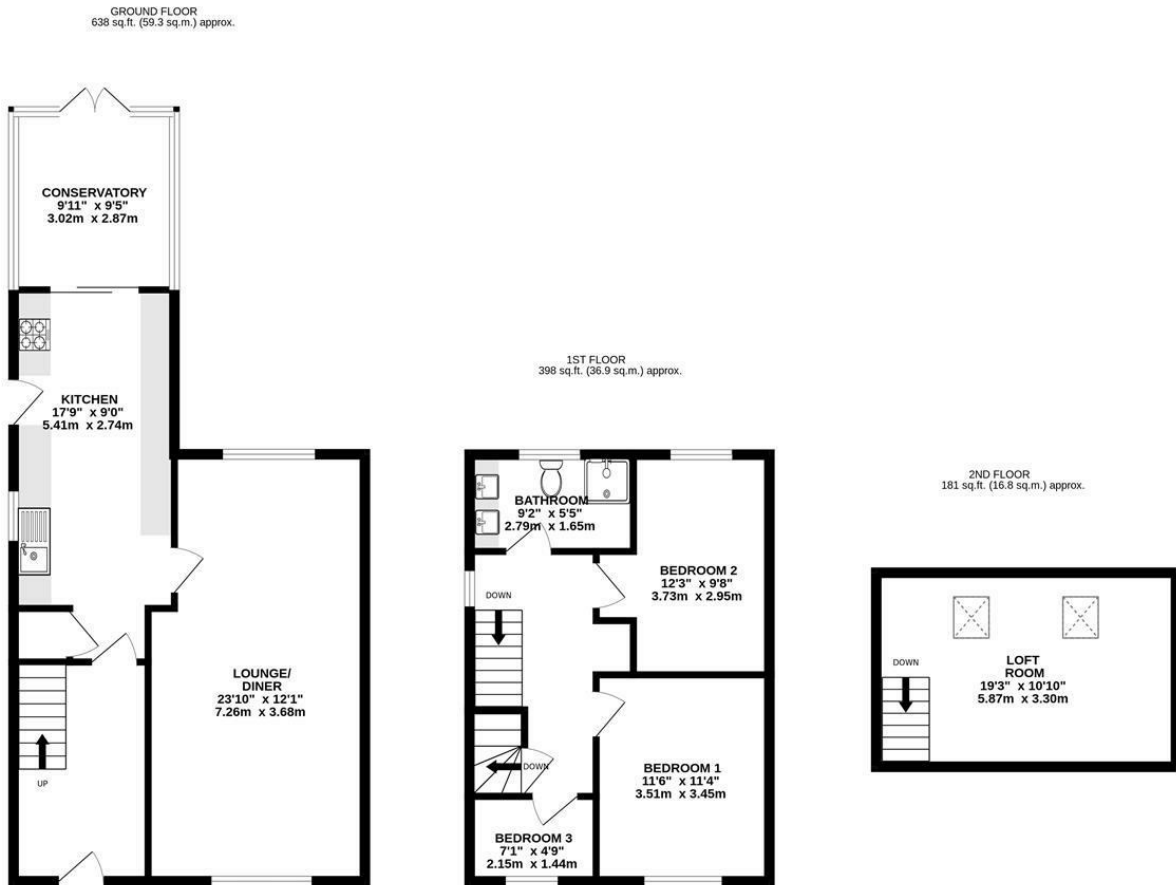
Outside



Additional photos



Floor Plan



TOTAL FLOOR AREA : 1217 sq.ft. (113.0 sq.m.) approx.

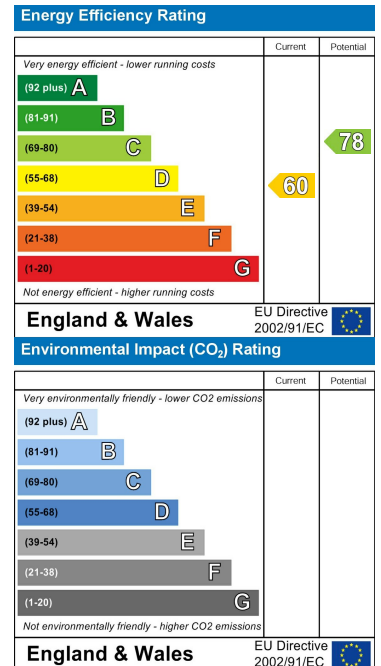
Whilst every attempt has been made to ensure the accuracy of the floorplan contained here, measurements of doors, windows, rooms and any other items are approximate and no responsibility is taken for any error, omission or mis-statement. This plan is for illustrative purposes only and should be used as such by any prospective purchaser. The services, systems and appliances shown have not been tested and no guarantee as to their operability or efficiency can be given.
Made with Metropix ©2026



Area Map



Energy Efficiency Graph



These particulars, whilst believed to be accurate are set out as a general outline only for guidance and do not constitute any part of an offer or contract. Intending purchasers should not rely on them as statements of representation of fact, but must satisfy themselves by inspection or otherwise as to their accuracy. No person in this firm's employment has the authority to make or give any representation or warranty in respect of the property.

Cade Estate Agency Ltd Company No. 11153015

52A Northfield Road, Messingham, North Lincolnshire. DN17 3SA

T: 01724 372 011 E: info@cade.co.uk W: cade.co.uk